

2018

OSSEO AREA SCHOOLS

ISD  279

## ECMAC Attendance Area Team

*December 13, 2018*

## Meeting Purpose and Outcomes

*The **purpose** of the ECMAC Attendance Area Team is to increase community trust in the process used to identify boundary (attendance area) adjustments that ECMAC will recommend for implementation in the **fall of 2020**.*

In order to facilitate our work together, we agree to:

1. intentionally consider the influence of race and culture by using a racial lens in our discussions and work;
2. make and keep promises;
3. share concerns directly with the person involved if a communication or relationship breakdown occurs;
4. listen for understanding, contribute and seek individual perspectives, and assume good intent;
5. be fully present; and
6. have fun!

**Outcomes:** As a result of our meeting, members will:

1. begin to draft attendance area recommendations; and
2. understand their role in the process.

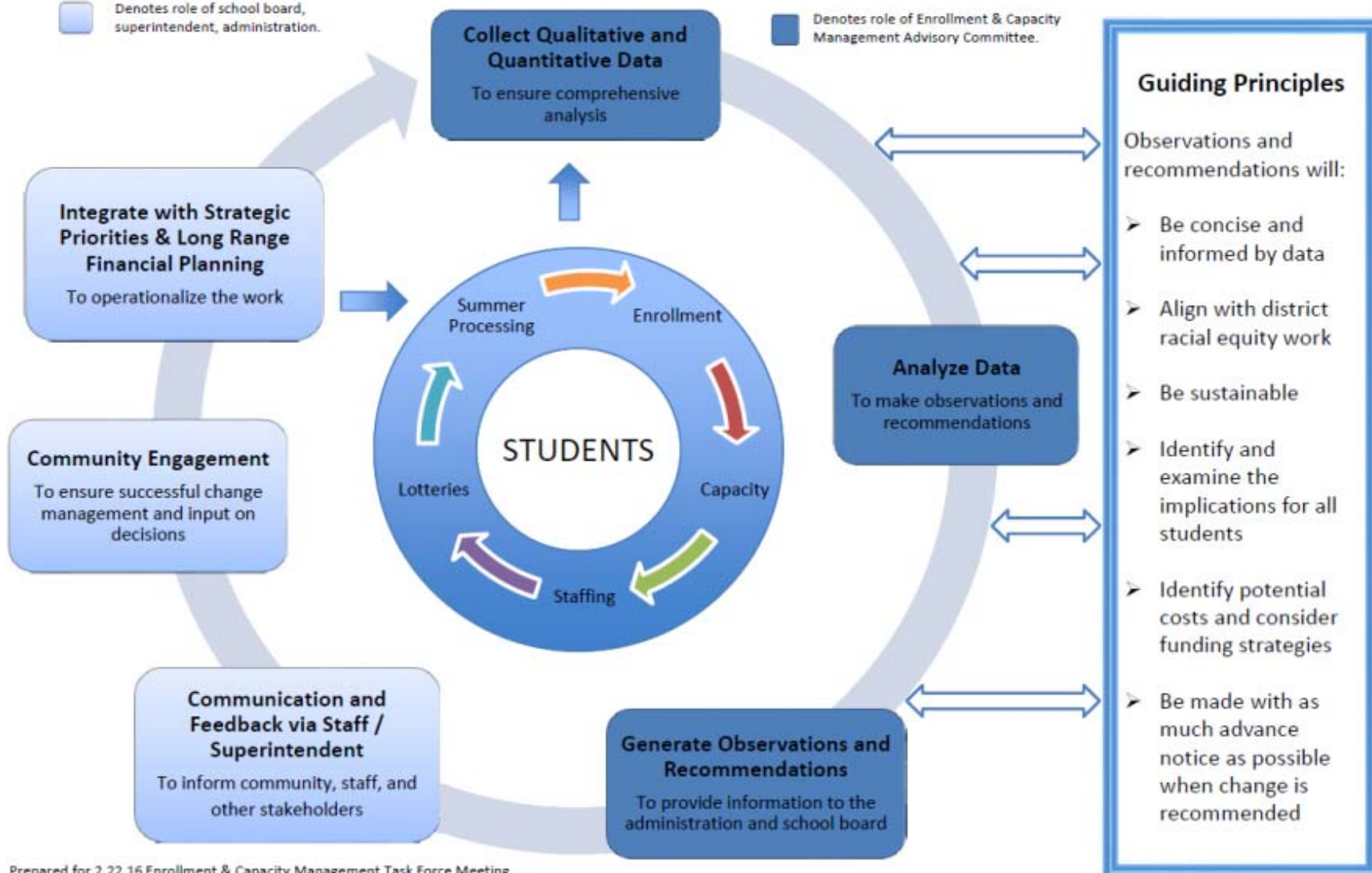


# ENROLLMENT & CAPACITY MANAGEMENT FRAMEWORK

Purpose: To increase community trust in Osseo Area Schools through engagement in long-range planning for enrollment and building use

Denotes role of school board, superintendent, administration.

Denotes role of Enrollment & Capacity Management Advisory Committee.



The background features a repeating geometric pattern of interconnected triangles and polygons in a light blue-grey color. A thick, bright yellow curved line sweeps across the bottom of the slide, separating a solid dark blue area at the very bottom from the rest of the background. The text is centered in the upper half of the slide.

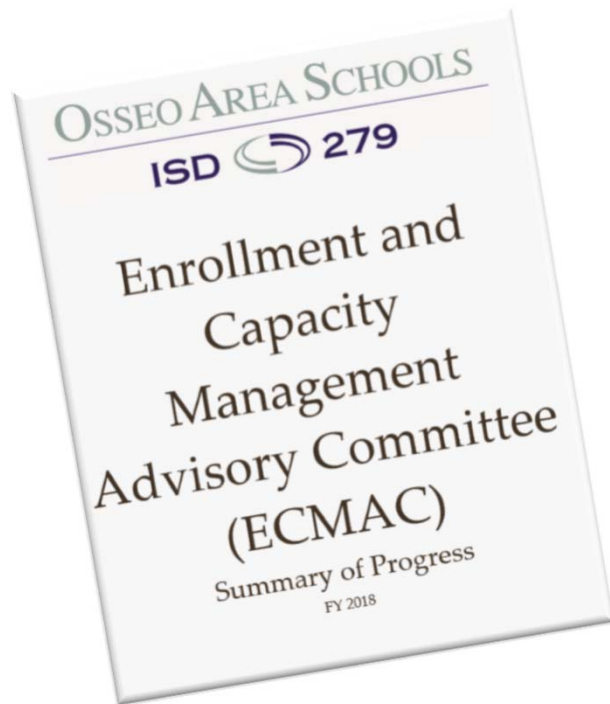
# **GROUNDING AND REVIEW**

## Supt. recommendations, spring 2018

- ▶ Direct staff to develop options to:
  - resolve overcapacity conditions at Basswood, Rice Lake, and Garden City Elementary Schools, at Brooklyn Middle School, and at Maple Grove, Osseo, and Park Center Senior High schools; and
  - prepare for anticipated enrollment growth in the attendance area served by Fernbrook Elementary School.



# Available options



- ▶ Attendance area adjustments
- ▶ Build a new school
- ▶ Construct an addition/expansion of a school
- ▶ Close or repurpose a school
- ▶ Do nothing

Note: Administrative actions such as modifying open enrollment status of a school or relocation of a program occur regularly.



# School Board action on September 11, 2018: Expand lease levy authority

- ▶ Purpose: Maintains construction as a potential option to provide timely (by fall of 2020) capacity relief to address gaps identified by ECMAC
- ▶ Amount: \$15 million
- ▶ Estimated tax impact (\$250,000 home): \$18/year





**Five Year Enrollment and Capacity Option Development Timeline (FY 2019 - FY 2023)**

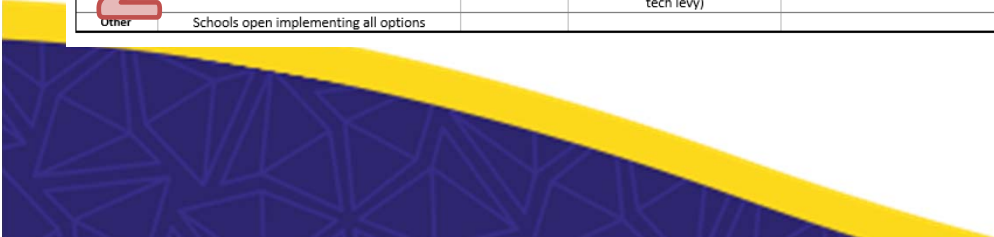
Items in red denote School Board actions that would maintain construction as a potential option to provide timely (by fall of 2020) capacity relief that would address gaps identified by the Enrollment & Capacity Management Advisory Committee.

Available Options identified by Enrollment and Capacity Management Framework (ECM Task Force, 2016)

1. Adjust attendance areas (change boundaries)
2. Build a new school
3. Construct an addition/expansion of a school
4. Close or repurpose a school
5. Do nothing

Note: Administrative actions such as modifying open enrollment status of a school or relocation of a program occur regularly.

FY 2019	September 2018	October 2018	November 2018	December 2018	January 2019	February 2019	March 2019	April 2019	May 2019	June 2019
School Board	September 11 Work Session ✓ Review timeline September 18 Regular Meeting ✓ Set preliminary FY 2020 Levy			December 18 Regular Meeting ✓ Set final FY 2020 Levy			March 5 or 12 Work Session ✓ Approve initial options			
ECMAC Mtgs		October 29		December 17	January 7	February 25	March 18	April 15 & 29		
Election Dates			General - November 6 (five renewal dates remain for op levy, tech levy)							
Other							Begin design development			
FY 2020	September 2019	October 2019	November 2019	December 2019	January 2020	February 2020	March 2020	April 2020	May 2020	June 2020
School Board	September Regular Meeting ✓ Set preliminary FY 2021 Levy			December Regular Meeting ✓ Set final FY 2021 Levy	January Regular Meeting ✓ Construction bids					
ECMAC Mtgs	Meetings held throughout year									
Election Dates			General - November 5 (four renewal dates remain for op levy, tech levy)			Option: Bond - February 11		Option: Bond - April 14	Option: Bond - May 12	
Other										
FY 2021	September 2020	October 2020	November 2020	December 2020	January 2021	February 2021	March 2021	April 2021	May 2021	June 2021
School Board	September Regular Meeting ✓ Set preliminary FY 2022 Levy			December Regular Meeting ✓ Set final FY 2022 Levy						
ECMAC Mtgs	Meetings held throughout year									
Election Dates			General - November 3 (three renewal dates remain for op levy, tech levy)							
Other	Schools open implementing initial options									
FY 2022	September 2021	October 2021	November 2021	December 2021	January 2022	February 2022	March 2022	April 2022	May 2022	June 2022
School Board	September Regular Meeting ✓ Set preliminary FY 2023 Levy			December Regular Meeting ✓ Set final FY 2023 Levy						
ECMAC Mtgs	Meetings held throughout year									
Election Dates			General - November 2 (two renewal dates remain for op levy, tech levy)							
Other										
FY 2023	September 2022	October 2022	November 2022	December 2022	January 2023	February 2023	March 2023	April 2023	May 2023	June 2023
School Board	September Regular Meeting ✓ Set preliminary FY 2024 Levy			December Regular Meeting ✓ Set final FY 2024 Levy						
ECMAC Mtgs	Meetings held throughout year									
Election Dates			General - November 8 (one renewal date remains for op levy, tech levy)							
Other	Schools open implementing all options									





# Options to reduce over-capacity conditions at Basswood, Garden City, and Rice Lake Elementary

## Osseo Area Schools

### Options to reduce over-capacity conditions at Basswood, Rice Lake and Garden City Elementary Schools

**Construct an addition/expansion of a school:** add space at Oak View and Garden City Elementary Schools

- ✓ Project estimate is within \$15 million lease levy authority included in preliminary levy
- ✓ Capacity of core areas at Oak View and Garden City can accommodate additional students (see page 23 of ECMAC Summary of Progress Report; May 2018)
- ✓ Oak View has not received latest addition completed at schools with similar floorplan (Basswood, Rush Creek, Fernbrook)
- ✓ Maintains similar operational cost for administrative and support staffing
- ✓ Oak View and Garden City can accommodate space for additional parking
- ✓ Project can be completed by fall of 2020

**Attendance area adjustment:** move students from Basswood and Rice Lake Elementary Schools and adjust attendance areas accordingly

- ✓ Attendance area team begins meeting on November 19

# ECMAC Guiding Principles and Additional Considerations re: attendance area adjustments

## **ECMAC Framework Guiding Principles**

Observations and recommendations will:

- Be concise and informed by data
- Align with district racial equity work
- Be sustainable
- Identify and examine the implications for all students
- Identify potential costs and consider funding strategies
- Be made with as much advance notice as possible when change is recommended



# **ECMAC Guiding Principles and Additional Considerations re: attendance area adjustments**

Additional considerations (outlined below) will serve as an additional compass for attendance area recommendations. It may not be possible to achieve each of these considerations and at times they may be in conflict with each other.

When possible, attendance area recommendations should:

1. limit the number of transitions for individual students and neighborhoods
2. be largely contiguous
3. maintain efficient bus routes
4. assign neighborhoods to the same attendance area

The process and outcome must adhere to all School Board Policies and State and Federal laws.



# Success Statements – created at 11.19.18 AAT meeting

1. Communicate and be transparent
2. Consider the impact of race
3. Act with integrity and leadership as individuals on ECMAC
4. Consider impact on all
5. Be data driven
6. Use long term thinking and understand the past



# Table Work



*We will know we [insert success statement] if \_\_\_\_\_?*



The background features a repeating geometric pattern of interconnected triangles and lines in a light blue-grey color. A thick, bright yellow curved line sweeps across the bottom of the slide, separating a solid dark blue area at the very bottom from the rest of the background.

# **FORM WORK GROUPS**

## **Tonight's work group goal**

To begin to draft multiple ways to adjust elementary attendance areas to resolve over-capacity conditions at Basswood and Rice Lake, as needed (for further consideration by ECMAC)





# Current Data (subject to change)

FY 2018 Summary of Progress Report Data		
	FY 2019 <b>projected</b> Over/(under) Capacity	FY <b>2023</b> <b>projected</b> Over/(under) Capacity
Basswood	151	209
Rice Lake	137	179
Oak View (with additional capacity)	(511)	(512)

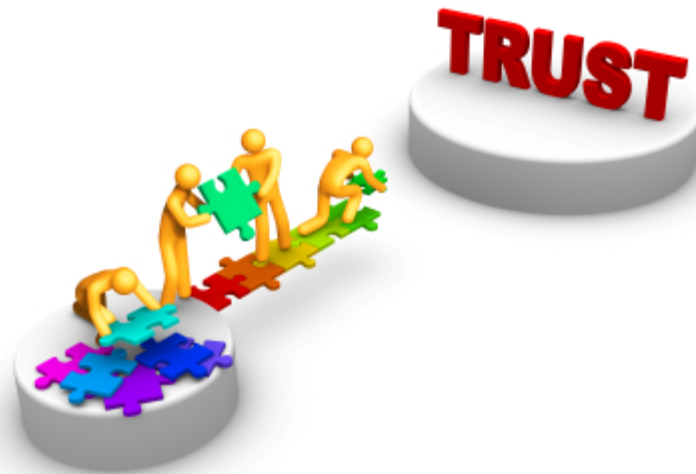


# Next Steps

- ▶ Group work
  - Group 1 (table 3 & 4): Troy Schreifels; room W41
  - Group 2 (table 1 & 2): Christian Olson; room N10
- ▶ We are a school district, not a district of schools
- ▶ Parking lot
- ▶ Be creative
- ▶ Return to the Forum Room by 8:00

# REPORT OUT

# Table Reflection



*We will know we [insert success statement] if ...*



# What happened tonight?

1. We learned how complicated this will be
2. We don't want to undervalue the work done tonight. It gave us a first experience, next time we will be much faster and better.
3. Large census areas does not equal lots of students.
4. Students are more condensed geographically than we thought.
5. This made the work more real. It added questions that we didn't have before.
6. Objectives are clear, but they can be in conflict.
7. Multiple approaches to how to meet objectives. With every voice, there is a different perspective.
8. Understand how islands were created. Islands were not "created", they "came about"; perhaps not intentionally created.
9. Things about the current state that makes this work more difficult. Our starting line is not a blank slate.
10. Perfection is not the goal.



# Evaluation & Next steps

## ECMAC and **Attendance Area Team** Meetings

1. December 17, 2018 – Rice Lake; data refresh
2. January 7, 2019 – MGSB; focus on communication
3. **Thursday, January 24, 2019 – ESC; boundary work**
4. **Thursday, February 7, 2019 – ESC; boundary work**
5. February 25, 2019 – Crest View
6. **Thursday, ~~February 21, 2019~~ February 28, 2019 - ESC**
7. March 18, 2019 – Osseo Middle
8. April 15, 2019 – ESC
9. April 29, 2019 – ESC

